

SMS MEER

SMS group

SMS MEER at a glance



MEETING your **EXPECTATIONS**

SMS MEER GMBH

Ohlerkirchweg 66
41069 Mönchengladbach
P.O. Box 100645
41006 Mönchengladbach
Germany

Phone: +49 (0) 2161 350-0
Fax: +49 (0) 2161 350-1667

info@sms-meer.com
www.sms-meer.com

IB/O.1365E
06/14

CUTTING-EDGE technology since 1872

Tradition, leading know-how and innovations are united in the long company history of SMS Meer.

- 1872** Founding of Maschinenfabrik Meer by the Meer brothers
- 1926** Meer AG, 100% Mannesmannröhren-Werke
- 1955** Company is renamed Mannesmann Meer AG
- 1975** Mannesmann takes over Demag AG
- 1996** Takeover of the Tube Technology division of Innse
- 1999** Merger between Mannesmann Demag AG Metallurgy and SMS Schloemann Siemens AG to form SMS Demag AG
- 2000** Establishment of SMS Meer GmbH
- Expansion of the product portfolio to include plants and machines for the aluminium industry (Hertwich Engineering GmbH)
- 2005** Integration of the competence centre for continuous casters (Technica) into the Mönchengladbach operations
- 2007** Expansion of the product portfolio to include closed-die forging, extrusion presses and ring rolling (SMS Eumuco)
- 2008** Takeover of the machine engineering activities of Schumag AG, expansion of the product portfolio to include drawing machines and bright steel production lines as well grinding and polishing machines
- Expansion of the portfolio to include spiral pipe welding lines (PWS Automatisierungs- und Elektrotechnik GmbH)
- 2008** Takeover of the machine engineering activities of Schumag AG
- 2011** Incorporation of SMS CONCAST into the SMS Meer Business Area

FOR SATISFIED CUSTOMERS

Company

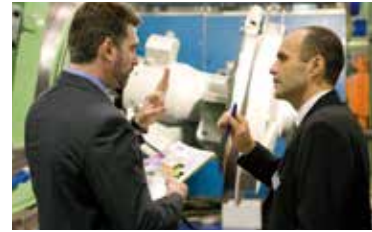
SMS Meer is a division of the SMS group, world market leader in plant and machine engineering for the industrial processing of steel, aluminium and non-ferrous (NF) metals. Through organic growth and acquisitions of further leading companies, SMS Meer has developed into the leading full-line provider in the field of metal forming. With a product-spanning service organisation, the company offers its customers optimum support in all areas even after the commissioning of the machines and plants.

With offices in Western and Eastern Europe, the Middle East and Asia as well as North and South America, SMS Meer cooperates with its customers around the globe. The annual turnover totals EUR 1.2 billion.

Employees

SMS Meer has 3,000 employees, more than half of whom at the company headquarters in Mönchengladbach (North-Rhine Westphalia) – including 80 apprentices. As a family-owned company, SMS Meer practices the corporate culture of a medium-sized enterprise with flat hierarchies and short decision routes.

The cooperation is marked by direct communication, respect and trust – while at the same time employing professional management methods and standardised processes.



Products and customers

Whether tubes for pipelines, rails for the high-speed ICE and TGV trains, transmission components for the Mercedes S Class, the outer skin of the Ariane rocket or gigantic wind power generators: The machines and plants tailored by SMS Meer ensure the flawless production of the necessary parts of the highest possible standard. SMS Meer holds a roughly 40 percent share of the world market, making the company the undisputed world market leader for metal forming plants.

The STRUCTURE Organised STRENGTH

SMS group

SMS MEER Business Area

SMS SIEMAG Business Area



Steelworks /
Continuous Casting

Electric Arc
Furnaces

Secondary
Metallurgy

Continuous
Casting (Long
Product Mills)



Tube Plants

Seamless
Tube Plants

Welded Tube
Plants

Spiral Tube
Plants

Finishing Plants
and Machines



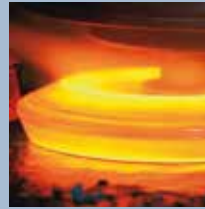
Long Product
Mills

Section and
Billet Mills

Light Section
Mills

Wire Rod
and Bar Mills

Bright Steel
Processing
Lines



Forging
Technology

Hydraulic
Presses

Extrusion
Presses

Closed Die
Forging

Ring Rolling



NF Metal Plants

Aluminium
Plants

Copper Plants



Heat Treatment

Induction
Technology

Furnace Plants

Hardening
Machines

Quench and
Temper Lines

Service



SEAMLESS TUBE PLANTS

FOR HOT SEAMLESS TUBES

- Cross-roll piercing mills
- Mandrel mills
 - 3-roll systems (PQF®) with
 - retained circulating mandrel bar
 - retained mandrel bar
 - 2-roll systems (MPM)
- Assel mills
- Push benches / CPE mills
- Plug mills
- Hot pilger mills
- Sizing / stretch-reducing mills
 - 3-roll systems with
 - non-adjustable rolls
 - adjustable rolls (FPS and FQS)
- Rotary expanders
- Technological automation and quality management systems (CARTA® and LASUS®)



Cone-type piercer



Mandrel mill



Stretch-reducing mill



Cold pilger mill

FOR COLD SEAMLESS TUBES

- Cold pilger mills

WELDED TUBE PLANTS

WELDING LINES FOR TUBES AND SECTIONS UP TO 26"

- Strip preparation lines
- Strip cross welders
- Travelling strip cut-off machine
- Strip accumulators
- Strip edge millers
- Straightedge forming sections
- URD® rolling and squeeze stands
- Inside and outside scarfers
- Travelling saws and milling cut-off units
- Quick-change systems for rolls and stands
- Computer-controlled automation systems for setting and positioning of the rolls (Quicksetting)



Fully automated spiral strip accumulator



HFI tube welding



Sizing stands



JCO® pipe forming press

MACHINERY AND PLANTS FOR LARGE-DIAMETER PIPES UP TO 64"

- Plate edge milling machines
- Plate edge crimping presses
- Forming presses using the JCO® method
- 3-roll bending machines
- U-ing and O-ing presses
- Tack-welding machines
- Inside and outside welding machines
- Expanders
- Hydrostatic pipe testers
- Pipe chamfering machines

FINISHING PLANTS and MACHINES

INTEGRATED TUBE AND PIPE FINISHING LINES

INDIVIDUAL MACHINES

- Threading machines
- Chamfering machines
- Coupling threading machines
- Tooljoint finishing machines
- Drillpipe manufacturing equipment
- Stationary and travelling milling cut-off machines
- Edge milling machines
- Bundling stations
- Cross-roll straightening machines
- Hydrostatic pipe testers
- Pipe end upsetting and sizing presses



CNC thread cutting line



Hydrostatic pipe tester with coupling applicator

BECKER MACHINES

- Hot pilger die dressing machines
- Cold pilger die grinders
- Roll groove dressing machines for stretch-reducing mill stands



Roll groove dressing machine



Cross-roll straightening machine



SECTION and BILLET MILLS

HEAVY SECTION MILLS

- Breakdown stands
- Tandem reversing mills
- Cooling beds
- Straightening machines
- Finishing lines

MEDIUM SECTION MILLS

- Tandem reversing mills
- Semi-continuous and continuous mills

RAIL MILLS

- Universal mills
- Straighteners
- Finishing lines

CBP® PLANTS

- Casting and rolling plants for the production of beams

MPS® PLANTS

- Casting and rolling plants for the production of beams and sections

BLOOMING MILLS

- Two-high reversing blooming mill stands
- Finishing lines

BILLET MILLS

- Two-high reversing mills
- Semi-continuous and continuous mills

PROCESS CONTROL SYSTEMS

- Technological control systems
- Process models

PRODUCTION PLANNING SYSTEMS



Compact stand group of CCS® design



Turnover cooling bed



Breakdown stand of CCS® design



Horizontal and vertical (H+V) straightener for rails

WIRE ROD and BAR MILLS

WIRE ROD MILLS

- Mill stands
- High-speed wire rod blocks
- Sizing blocks for wire rod (FRS®)
- Loop laying heads with cooling conveyor (LCC®)



Wire rod block

BAR MILLS

- Mill stands
- Sizing systems for bars
 - 3-roll reducing and sizing blocks (PSM®)
 - Hydraulically adjustable mill stands (ASC®)
- Cooling lines



Loop laying head with cooling conveyor (LCC®)

GARRETT COILERS

PROCESS CONTROL SYSTEMS

- Technological control systems
- Process models



FRS® in a wire rod mill

PRODUCTION PLANNING SYSTEMS



5-stand PSM®

LIGHT SECTION MILLS

ROLLING MILLS FOR LIGHT SECTIONS

- Billet welding machines
- Housingless stands / cantilever stands
- Hot shears
- Slitting equipment
- Water cooling sections
- Rebar quenching and self-tempering systems (QST)
- High-speed delivery systems (HSD®)
- Cooling beds
- Cold shears and saws
- Straightening machines



Housingless roll stands

VERTICAL COMPACT COILERS (VCC®)

COMPACTING AND TYING MACHINES FOR WIRE ROD COILS



Cooling bed with high-speed delivery system (HSD®)

TYING MACHINES FOR BARS AND SECTIONS

COIL TRANSPORT SYSTEMS

ELECTRICAL SYSTEMS AND AUTOMATION

PROCESS CONTROL SYSTEMS



Vertical Compact Coiler (VCC®)



Stacking and tying machine



HYDRAULIC PRESSES

OPEN-DIE FORGING PRESSES



Open-die forging press with manipulator

RAIL-BOUND FORGING MANIPULATORS

HYDRAULIC RADIAL FORGING MACHINES



Hydraulic radial forging machine

SPECIAL PRESSES

- Sheet and plate stretchers
- Cable sheathing presses
- Presses for carbon electrodes

POWDER PRESSES

- Hydraulic CNC presses (up to 12 axes)
- Mechanical presses
- Hybrid presses
- Transport systems
- Tool adapter systems (CPA technology)
- Adapter changing systems



Hydraulic CNC powder press HPM 1200 E3

EXTRUSION PRESSES

- Extrusion and tube extrusion presses for light and heavy metals
- Fully automated handling systems



55 MN extrusion and tube extrusion press

EUMUCO HASENCLEVER CLOSED-DIE FORGING

MACHINES FOR HOT FORGING AND SEMI-HOT FORGING

STROKE-BOUND MACHINES

- Eccentric forging presses
- Wedge presses
- Crank presses

FORCE-BOUND MACHINES

- Hydraulic presses
 - Cold forming
 - Hot forming

ENERGY-BOUND MACHINES

- Screw presses
- Hammers

ROLLS

- Forging rolls
- Cross rolls

SPECIAL-PURPOSE MACHINES

- Electrical upsetting machines
- Horizontal forging machines
- Upline and downline forming presses
 - Mechanical
 - Hydraulic
- Shears
 - Cold shears
 - Hot shears
- Special machines

MISCELLANEOUS

- Automatic forging lines and plants
- Automation systems
- Spray technology
- Process and tool technologies



EP 2500 eccentric press



SPKA 22400 clutch-operated screw press



AMP 4000 Dieformer



QW 850/2 cross roll

WAGNER BANNING RING ROLLING

RING ROLLING MACHINES AND PLANTS

- Radial and radial-axial ring rolling machines
- Complete plants, including the necessary handling equipment

RING BLANK PRESSES

- Of frame design with fixed workstations
- Of frame, disc and column design with die shifting table

WHEEL ROLLING MACHINES AND LINES

- Wheel rolling machines and combined ring and wheel rolling machines
- Complete lines, including the necessary handling equipment

CLOSED-DIE ROLLING MACHINES AND LINES

- Axial closed-die rolling machines
- Radial closed-die rolling machines
- Complete lines, including the necessary handling equipment

RING EXPANDERS

COLD DIE ROLLING MACHINES

SOFTWARE SYSTEMS

- CARWIN
- ROLLTECH Rings, Wheels, Flanges, Profile
- ROLLTRONIC
- PRESSTRONIC
- EXPANTRONIC



Radial-axial ring rolling machine



Ring blank press



Solid wheel rolling machine



ROLLTECH Rings



COPPER PLANTS

FOR THE PRODUCTION OF SEMI-FINISHED PRODUCTS FROM NON-FERROUS AND PRECIOUS METALS

CASTING AND ROLLING PLANTS

- Shaft melting furnaces
- Anode casting wheels
- Casting and shearing lines for anodes, CONTILANOD®
- Casting and rolling lines for wire rod, CONTIROD®
- Casting and rolling lines for narrow strip, CONAS®

CONTIROD® is a registered trademark of Aurubis Belgium

TUBE PLANTS

- Integrated copper tube plants, directube®
- Planetary rolling mills – PSW
- Cold pilger mills – KPW

TECHNICA CONTINUOUS CASTING PLANTS

- Complete copper casthouses
- Vertical continuous and semi-continuous casting plants for extrusion billets, slabs and cold-rollable strips
- Vertical continuous casting plants for precision casting (tubes, wire rod, bars and profiles)
- Horizontal continuous casting plants for cold-rollable strips, extrusion billets, wire rod, tubes and bars
- Horizontal continuous casting plants for cast iron, precious metals and special alloys



Loop laying head with ring forming chamber for wire rod coils up to 5 t



Planetary rolling mill



Horizontal continuous casters for cold-rollable strips



Vertical continuous caster for extrusion billets

ALUMINIUM PLANTS

HERTWICH ENGINEERING

- Continuous homogenising plants
- Chamber-type homogenising furnaces
- Ultrasonic testing equipment
- Sawing plants
- Stacking, marking and packing machines
- Swarf briquetting presses
- Charging machines
- Horizontal continuous casters for
 - Round bars,
 - Foundry and rolling ingots,
 - T bars
 - Busbars
- Vertical continuous casters
- Belt-type ingot casters
- Compact-type remelt plants
- Efficient melting systems for chips and small scrap
- Melting and casting furnaces for contaminated scrap
- Electromagnetic liquid metal pumps and stirrers
- Rotary tilting-type furnaces, 3 - 14 m³ capacity



Continuous homogenising plant with transport facility



Horizontal continuous caster



Rotary tilting-type furnace



Ingot scalping machine

KNOEVENAGEL MACHINES

- Ingot scalping machines with vertical and horizontal milling heads
- Edge scalpers for aluminium slabs
- Band saws for aluminium slabs
- In-line scalpers for trapezoidal aluminium profiles

HEAT TREATMENT

SMS ELOTHERM

PLANTS FOR INDUCTION HEATING AND HEAT TREATMENT

TUBES

- High-frequency tube welding
- Seam, full body and bright annealing
- Tubes and bar quenching and tempering
- Tube bending
- Wire rod and bar re-heating

FORGING

- Billet heating
- Bar heating

HARDENING

- Engine components
- Drive train and power train components
- Large-diameter rings and gears

SPECIAL APPLICATIONS

- Strip heating
- Strip stabilising
- Induction stirring
- Laser applications

SMS MEER S.P.A.

FURNACE PLANTS

- Heating furnaces
- Reheating furnaces
- Holding furnaces
- Rotary hearth furnaces
- Quench and temper lines



The induction principle



Induction heating



Induction hardening



Heating furnace

COLD FINISHING

SCHUMAG & KUPFER

BRIGHT STEEL PROCESSING LINES

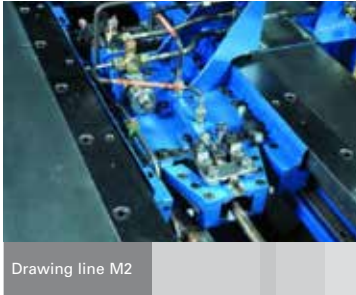
- Pre-straightening
- Peeling
- Bright bar straightening
- Chamfering and sawing
- Automatic bundling
- Handling systems



Peeling machine

DRAWING LINES SOLID MATERIAL

- Pay-off reels
- Straighteners for pre- and final straightening
- Cutting devices
- Bright bar straightening machines
- Integration of testing equipment
- Chamfering machines
- Automatic bundling



Drawing line M2

GRINDING AND POLISHING MACHINES

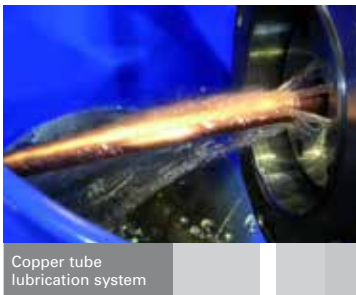
- Centerless grinding- and polishing machines
- Regulating wheel grinding machines
- Handling systems



Grinding and polishing machines

COPPER TUBE MACHINES

- Drawing cascades
- Spinner blocks
- Finish drawing lines for straight lengths and pancake coils
- Innergrooving lines
- Single and double level winders
- Basket handling systems



Copper tube lubrication system

SPIRAL PIPE TECHNOLOGY

PWS GMBH

SPIRAL PIPE MILLS

- 2-step spiral pipe mills (off-line) up to 64"
- 2-step spiral pipe mills (off-line) up to 100"
- Conventional spiral pipe mills (on-line) up to 120"
- Accumulators for continuous production process
- Strip cross welding station with strip shear
- Strip edge milling machines
- Pipe forming stand with CNC-axes
- Pipe Cutting Carriage with Water-Injection Plasma Cutter



Submerged Arc-Welding system

SUBMERGED ARC-WELDING SYSTEMS

- SA-Welding stands with orthogonal rollers up to 64"
- SA-Welding stands with helical conveyor up to 100"
- Automatic pipe feeding and discharge System
- Automatic welding start positioning system
- Automatic welding seam tracking system
- Multi-wire digital welding system



Pipe forming station

AUTOMATION AND MONITORING SYSTEMS

- 2nd/3rd level automation
- Pipe-ID and database system
- AMS process-management-system for production optimization



SA-Welding stands



Hydrostatic testing machine



SERVICE

The central Service Product Unit at SMS Meer ensures that customers are satisfied with their machine or plant a whole life long. The staff know every detail and every single component. After all, they developed and designed it themselves. That is why the experts from SMS Meer are exactly the right choice when it comes to ensuring lasting reliable operation of the plant.

The support from the SMS Meer Service experts ensures that the plants are regularly modified to meet changing market demands. Furthermore, the regular interaction with the Service personnel keeps the customer's know-how constantly up-to-date.

The advantages for the customer of the service provided by SMS Meer are obvious:

- Increased productivity
- Increased plant availability
- Improved product quality
- Reduced operating costs
- Safeguarding of the plant value



Process analysis



Repair and maintenance measures



Know-how transfer



Local service

PRODUCTION

In close cooperation with the design engineers, Production at SMS Meer ensures that the company's unique know-how is transformed into plants and machines of incomparable quality.

The colleagues in the workshops are constantly kept up-to-date in the fields of machine engineering, hydraulics, electrics and electronics.

The manufacture of the machines and equipment also includes the assembly with extensive test runs and a production-related simulation of the process sequences.

THE GREATEST STRENGTHS:

- Highly qualified, experienced personnel
 - Cost-effective production of the key components
 - Combination of the components into functional units during works assembly, including test run
 - Testing and documentation of the necessary technical basic data
- High quality standards with certification to DIN ISO 9001
- Continuous CAD / CAM process chain



Heavy-duty workshop in Mönchengladbach



Assembly of a 24" straightedge forming section



Alignment of an inductor



Roll adjustment for a stretch-reducing mill (SRM)

PROJECT MANAGEMENT

Building modern, efficient plants and machines is a complex business. For this reason, effective project management is crucial at SMS Meer. The goal is clear: All orders placed with the company should be completed on schedule and within the budget – to the benefit of the customer.

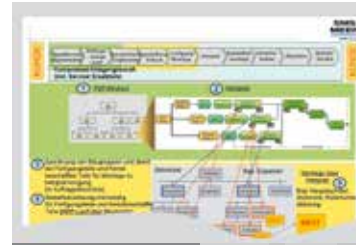
The whole project, from the initial discussion with the customer through to the start of plant production, is managed and documented in detail by the SMS Meer personnel. Within the framework of our stringent project control, requirements and objectives are defined together with the customer in the first step.

A detailed and realistic time schedule for the project then allows close monitoring of the work progress from the engineering, through logistics and erection right up to the commissioning of the whole production facility.

Clear management of the interfaces between host systems, automation and data processing are also of great importance.

Our ultimate goal is high customer satisfaction. Effective project handling, efficient use of resources, a smooth interplay between all the partners involved in the project and close adherence to time schedules are of paramount importance in achieving this goal. All this is ensured from the first moment of the cooperation.

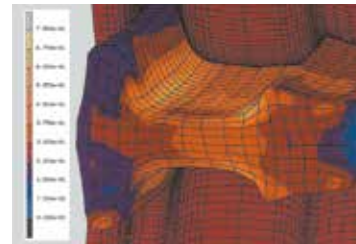
Thanks to effective project management to the benefit of the customer.



Central project control



Permanent dialogue



CAD-based construction



Optimum plant operation

COMPETENCE and SERVICE CENTRES

SMS Meer – at your side worldwide

In addition to cutting-edge know-how and innovation, speed and competence are the pivotal factors for success on the market. Our competence and service centres guarantee quick and effective service – we speak the customer's language.

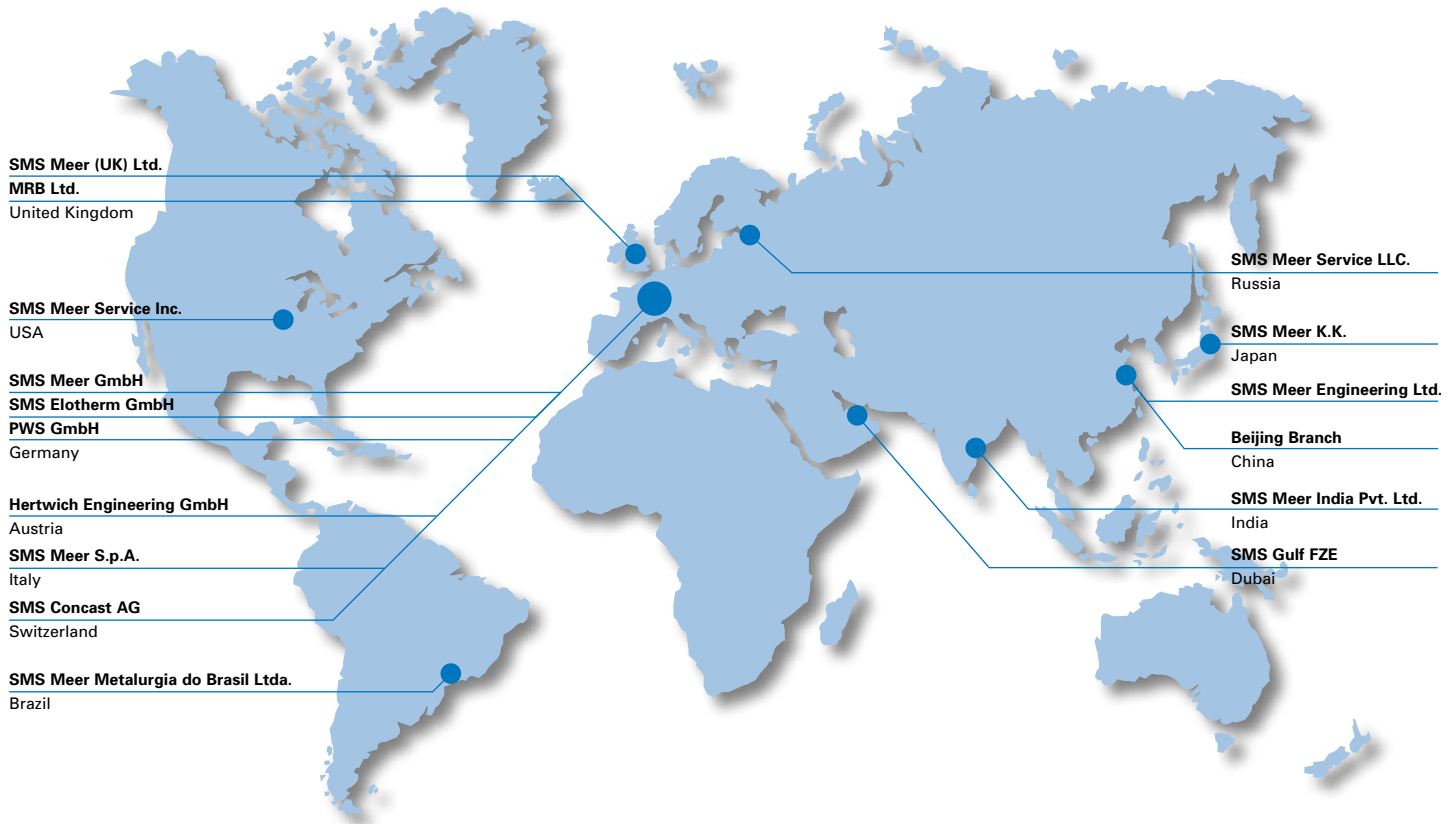
With offices in Western and Eastern Europe, the Middle East region and Asia as well as North and South America, SMS Meer is represented worldwide.

SMS Meer GmbH

Ohlerkirchweg 66
41069 Mönchengladbach
Germany
Phone: +49(0)2161 350-0
Fax: +49(0)2161 350-1667
info@sms-meer.com
www.sms-meer.com



Headquarter in
Mönchengladbach



COMPETENCE and SERVICE CENTRES

GERMANY

SMS Meer GmbH

Ohlerkirchweg 66
41069 Mönchengladbach
Germany
Phone: +49 (0) 2161 350-0
Fax: +49 (0) 2161 350-1667
www.sms-meer.com
info@sms-meer.com

Seamless tube plants
Welded tube plants
Finishing plants and machines
Section and billet mills
Wire rod and bar mills
Hydraulic presses
Extrusion presses
Closed die forging
Ingot scalpers and band saws
for aluminium
Service

Nerscheider Weg 170
52076 Aachen
Germany
Phone: +49 (0) 2161 350-0
Fax: +49 (0) 2161 350-1667
www.sms-meer.com
info@sms-meer.com

Bright steel processing lines
Copper plants

Stockumer Straße 28
58453 Witten
Germany
Phone: +49 (0) 2302 7098-3370
Fax: +49 (0) 2302 7098-3376
www.sms-meer.com
info@sms-meer.com

Ring and wheel rolling

SMS Elotherm GmbH

In der Fleute 2
42897 Remscheid
Germany
Phone: +49 (0) 2191 891-0
Fax: +49 (0) 2191 891-229
www.sms-elotherm.com
info@sms-elotherm.de

Induction technology
Hardening machines
Quench and temper lines

PWS GmbH

Zuppinger Str. 5
88213 Ravensburg
Germany
Phone: +49 (0) 751 29596-0
Fax: +49 (0) 751 29596-1010
www.pws-gmbh.info
pws@pws-gmbh.info

Spiral tube plants
Submerged arc-welding systems

AUSTRIA

Hertwich Engineering GmbH

Weinbergerstraße 6
5280 Braunau
Austria
Phone: +43 (0) 7722 806-0
Fax: +43 (0) 7722 806-122
www.hertwich.com
info@hertwich.com

Aluminium plants

SWITZERLAND

SMS Concast AG

Toedistrasse 9
8027 Zürich
Switzerland
Phone: +41 44 204 65 11
Fax: +41 44 202 81 22
www.sms-concast.ch
sales@sms-concast.ch

Electric arc furnaces
Secondary metallurgy
Continuous casting (Long product mills)

UNITED KINGDOM

SMS Meer (UK) Ltd.

Units 40-41, The Bridge Business Centre
Beresford Way, Dunston Road
Chesterfield S41 9FG
United Kingdom
Phone: +44 (0) 1246 266 250
Fax: +44 (0) 1246 266 255
www.sms-meer.com
serviceinfo@sms-meer.co.uk

MRB Ltd.

Henson Close
South Church Enterprise Park
Bishop Auckland
County Durham DL14 6WA
United Kingdom
Phone: +44 (0) 1388 7713-00
Fax: +44 (0) 1388 7713-40
www.mrbschumag.com
general@mrbschumag.com

ITALY

SMS Meer S.p.A.

Via Udine, 103
33017 Tarcento (Udine)
Italy
Phone: +39 (0) 432 799-111
Fax: +39 (0) 432 784-556
www.sms-meer.it
info@sms-meer.it

Light section mills
Furnace plants

RUSSIA

SMS Meer Service LLC.

40/4 Pulkovskoye shosse,
letter A, off. A8030
196158 Sankt Petersburg
Russia
Phone: +7 812 318 01 51
Fax: +7 812 318 07 37
www.sms-meer.ru
serviceinfo@sms-meer.ru

USA

SMS Meer Service Inc.

210 West Kensinger Drive
Cranberry Township, PA 16066-3435
USA
Phone: +1 724 553 3420
Fax: +1 724 741 0612
www.sms-meer.us
serviceinfo@sms-meer.us

234 S. Potter Street
Bellefonte, PA 16823-1387
USA
Phone: +1 814 355 4774
Fax: +1 814 353 6248
www.sms-meer.us
serviceinfo@sms-meer.us

BRAZIL

SMS Meer Metalurgia do Brasil Ltda.

Alameda Rio Negro
1030, Conj. 803
06454-00 Barueri
Brazil
Phone: +55 11419-18-181
Fax: +55 11419-18-177
www.sms-meer.com
serviceinfo@sms-meer.com

JAPAN

SMS Meer K.K.

Sapia Tower 25F
1-7-12 Marunouchi
Tokyo 100-0005
Japan
Phone: +81 (0)3 5293 0201
Fax: +81 (0)3 5293 0202
www.sms-meer.jp
info@sms-meer.jp

P. R. CHINA

SMS Meer Engineering (China) Ltd.

No.2200, South Lianhua Road
Minhang District
Shanghai 201108
P.R. China
Phone: +86 (0) 21 2408 6500
Fax: +86 (0) 21 2408 6400
www.sms-meer.cn
serviceinfo@sms-meer.cn

Beijing Branch
Room 806, 8th Floor, Juanshitiandi
Tower A
No. 50A Wangjing Xilu,
Beijing 100102
P.R. China
Phone: +86 (0) 10 5907 7175
Fax: +86 (0) 10 5907 7140
www.sms-meer.cn
serviceinfo@sms-meer.cn

INDIA

SMS Meer India Pvt. Ltd.

RDB Boulevard, 4th Floor, Unit-D
Plot No. K1, Block EP & GP
Kolkata - 700 091
India
Phone: +91 33 66 22 1599
Fax: +91 33 66 22 1555
www.sms-meer.com
info@sms-meer.com

DUBAI/UAE

SMS Gulf FZE

Dubai Airport Free Zone
Building 4E, Block A, Office G16
P.O. Box 54795
Dubai
Phone: +971 4-204-5010
Fax: +971 4-204-5017
www.sms-gulf.ae
info@sms-gulf.ae

SAUDI ARABIA

SMS Saudi Arabia LLC.

Taba Center, 1st Floor Suite 4
Prince Sultan Road
P.O. BOX 4822 Al Khobar 31952
Kingdom of Saudi Arabia
Phone: +966 3 887 58 30
Fax: +966 3 887 58 31
www.sms-gulf.ae
info@sms-gulf.ae